

GREAT  
TECHNOLOGY

  
POLAR BEAR



**Roto**Climate

DESIGNED FOR  
LARGE SPACES

**24000BTU**  
INVERTER

**A++**



Air conditioning has  
never been  
that aesthetic

Air conditioning is under your control with the newest Polar Bear series which has a -24000 BTU capacity and a modern unique design



# Extra features



## A++

A++ Inverter Technology is a technology that achieves more efficiency and provides more comfort by changing the operating frequency of the motor.



## Sleep Mode

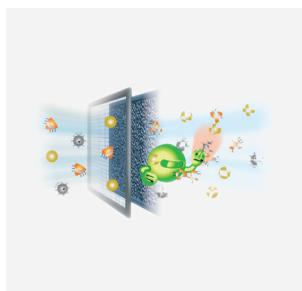
Comfort sleep mode is activated with the off button selected before sleep, thus preventing overheating and cooling during the night.



42000BTU  
48000BTU

## R410A

24000BTU



## Bio Filter

BioFilter blocks harmful bacteria and keeps the air clean and fresh.



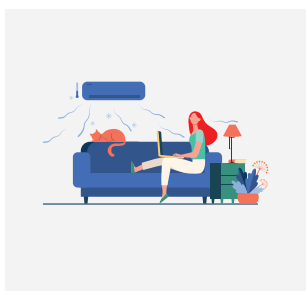
## 34dB

Ultra Quiet Operation  
(24000BTU)

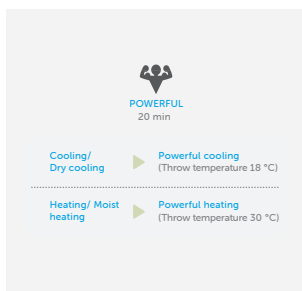


## -15°C

Runs even at -15 degrees



Wide blade angle spreads comfort throughout the room



## Turbo Mode

INVERTER  
**42000BTU**  
Cooling 42000 BTU max  
Heating 47000 BTU max

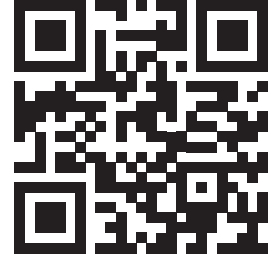


INVERTER  
**48000BTU**  
Cooling 50000 BTU max  
Heating 64000 BTU max



INVERTER  
**24000BTU**  
Cooling 29100 BTU max  
Heating 33400 BTU max





MODEL		Polar 24	Polar 42	Polar 48
Cooling Capacity	kW	7,0	12.1	14,1
	Btu	24000 ( 2340-29100)	41000(10000-42000)	48000(40000-50000)
Heating Capacity	kW	6,1	8.4	11,10
	Btu	26000 (9600-33400)	45000(11500-47000)	55000(28000-64000)
SEER/SCOP	W/W	6,1 / 4,0	5,8 /4,2	6.1 / 4.0
EER/COP	W/W	3,01/ 3,81	2,73 / 3,38	3,01/ 3,61
Working Current (Cooling)	A	10,4 (2,5-16)	19.5(3.1-20.4)	20.8 (10.9-23.5)
Working Power (Cooling)	W	2340 (570-3600)	4400(680-4600)	4670 (2400-5100)
Working Power (Cooling)	A	8,9 (6,7-14)	17.0(3.4-19.5)	19.9 (13.6 - 20.7)
Working Power ( Heating)	W	2000 (1450-3150)	3900(750-4400)	4470 (3030-5220)
OUTDOOR		Polar 24 ID	Polar 42 IDX	Polar 48 IDX
Operating Temperature/ Cooling	°C	-15 / 50	-15 / 50	-15 / 50
Operating Temperature/ Heating	°C	-15 / 24	-15 / 24	-15 / 24
Electricity Supply	-	220~240V / 50Hz / 1Ph	220~240V / 50Hz / 1Ph	220~240V / 50Hz / 1Ph
Energy Class	-	A++ / A++	A+ / A+	A++ / A+
Cooler liquid	kg	1,95 R410A	2,3 R32	2,9 R32
Liquid/Gas Copper Pipe	inch	(1/4" / 1/2")	(3/8" / 5/8")	(3/8" / 5/8")
Maximum Pipe Length	m	50	75	65
Maximum Height Difference	m	25	30	30
Sound Power Level	dB(A)	68	73	71
Sound Pressure Level	dB(A)	58,5	64	63
Air Flow	m <sup>3</sup> /h	3500	5100	7500
Weight (device)	kg	44,7/47,9	66.87/71.51	103,7/118,3
Dimensions (W/D/H)	mm	890x342x673	946x410x810	952 × 415 × 1333
Dimensions (W/D/H) packaged	mm	995xx398x740	1090x500x885	1095 × 495 × 1480
INDOOR		Polar 24 OD	Polar 42 ODX	Polar 48 ODX
Sound Power Level	dB(A)	59	65	66
Sound Pressure Level (H/M/L)	dB(A)	39,5/37,5/34,5	52 /49 /46 /40	51 / 49 / 46 / 43
Air Flow (Hi/Me/Low)	m <sup>3</sup> /h	990/760/640	1900 /1750 /1550	2000 / 1850 / 1450
Weight (device)	kg	29,9/38,4	49.75 / 61.89	57,1 /74,9
Dimensions (W/D/H)	mm	405x405x1775	585x405x1830	610x390x1925
Dimensions (W/D/H) packaged	mm	2000x510x490	2060x750x550	765x515x2070

Üretici firmanın haber vermesizin ürün özelliklerinde değişiklik yapma hakkı vardır.  
Katalogta yer alan tipografik hatalardan firmamız sorumlu değildir.  
Enerji değerleri bölgesel değişiklikler gösterebilir.

